

# Roselle History Museum Newsletter

Official Publication of the Roselle Historical Foundation

39 East Elm Street Roselle, IL 60172-2026

Ph:630-351-5300 E-mail: [rosellehistory@sbcglobal.net](mailto:rosellehistory@sbcglobal.net)

Spring 2013 Issue

## HOW ARE WE DOING?

Are we including the type of articles and personal memories about the Roselle area that you like in our newsletter?

If there are areas you would like to hear more about or if you would like to share your memories please let us know. We will try our best to give you what you want. Just E-mail us at [rosellehistory@sbcglobal.net](mailto:rosellehistory@sbcglobal.net).

## 2013 ROSE PARADE.

The annual Roselle Rose Parade will be held on June 2, 2013. Watch for the Roselle History Museum float.

## Board of Directors

Ray Hitzemann—Pres.

Glenn Spachman -  
Treas./VP

Ruth Bagel—Secretary

Milan Bagel

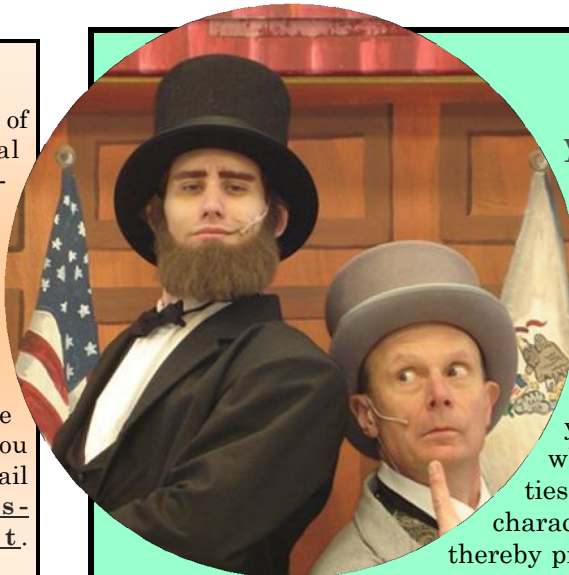
Walter Lotz

Kathy Schabelski

Frank Zielinski

Historian

Joan Beauprez



## *HONEST ABE: A CHARACTER YOU CAN COUNT ON*

The Roselle History Museum is pleased to host Face-to-Face Productions again this year to present our historical evening on April 13, 2013 at the Trinity Family Life Center, 405 S. Rush Street, Roselle. This year's program is a musical melodrama in which Abraham Lincoln overcomes adversities and obstacles by developing tried and true character traits to lead the Union to victory, thereby preserving the United States for future generations. Previous programs we have enjoyed by Face-to-Face have been *Lewis and Clark* and *The Wright Brothers*. Please see the letter insert for further information about the program and how to acquire tickets.

Please join us for a wine and cheese reception at 7:30 p.m. featuring the fine wines of Lynfred Winery followed by the "Honest Abe" program. Homemade cookies, coffee, and lemonade will follow the program.

Advance tickets are \$15 and can be purchased at the Roselle Village Hall, 31 S. Prospect Street, at the Roselle History Museum's Office, 39 E. Elm Street, or from museum members starting March 1st. Tickets purchased at the door the night of the program will be \$18. Students ages 6 – 12 will be admitted free.

For questions contact: Susan Spachman, Roselle History Museum Program Chair.

630-529-6228

## **CHRISTMAS OPEN HOUSE**

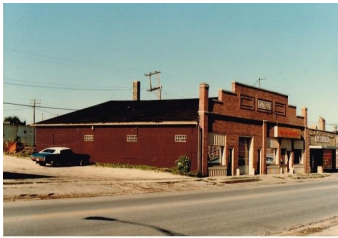
We would like to thank everyone that helped make our Christmas open house a great success. More than 100 visitors enjoyed the home made treats and toured the museum buildings. A few who happened to be in the Richter house at the right time got to hear Curt Wolfanger play some Christmas carols on the pump organ. The door prize winners were: Nancy Gasparro— A poinsettia donated by Platt Hill Nursery; June Detwiller- cookies donated by Peg Schwermann ; Catherine Smith- Remembering Roselle history book; Kathy Schabelski- Lynfred Wine Tasting Coupon donated by Lynfred Winery; Pastor Mueller Jr.— A bottle of Lynfred wine.

## PABICH MOTOR SALES.

Pabich Motor Sales was a business that opened in Roselle in April of 1946 in a building located at 35 E. Irving Park Road. The building had been constructed June of 1916 by Roselle Mill & Lumber Company. It was 60 feet long and 72 feet wide.

It housed a Ford Dealership until 1945. In April 1946 The building along with an empty lot to the east was purchased by the Pabich family from Mrs. Renatta Fenz.

The next several decades Pabich sold a large variety of vehicles from that location. First it was a Kaiser/Frazer Dealership. In 1955 they switched to a DeSoto franchise and also sold Diamond T trucks, Willis Jeep and Graham rototillers. When DeSoto was phased out, they obtained a Studebaker franchise. When Studebaker went out-of-business, they became an American Motors dealership. In 1959 they became a Chrysler/Plymouth dealership. In February 1969, Fireside Chrysler/Plymouth purchased the dealership and operated it until 1979 when they moved to Schaumburg, IL. The building was eventually torn down as a part of the Roselle TIF redevelopment program.



## ROSELLE BOY'S CLUB

In 1950 Roselle had only one organized activity for teenage boys and that was the American Legion baseball team coached by "Pop" Dunbar. So the Police Chief of Roselle, Richard LaMar, asked Bill Ham who was then a freshman in high school, to organize a club for teenage boys in town.

Most of the teenage boys who were not playing Legion baseball joined the club. In the summertime we played 12 inch softball with each other at the field by the Scout Lodge where the Miracle Field is now located.

Sometimes we played men's teams from other towns. One of the most memorable games was against a men's team from Bartlett. They had a pitcher that could really make the ball jump. His name was "Puttsy" Schultz. We could not hit him at all and we were slaughtered that day.

In the winter time Chief LaMar made arrangements for us to use the gym at the Maple Street Public school in the evenings so that we could continue to play basketball.

The teenage girls in town felt slighted so they organized a girls club of their own. I am not quite sure what they did but we had several combined events. One of them was a dance in the gymnasium at the Maple Street school.

We also entered a combined float in the Rose Parade one year. Bill Ham's father was a dairy herdsman at the Odium farm on Central Avenue. So he got a tractor and wagon from

the farm.

We built the float using chicken wire with the small octagonal holes in it and stuffed Kleenex of different colors in the holes to make the back grounds. We built the float at Mary Wentz's home at Hattendorf and Prospect so we did not have to pull the float very far!

### MEMORIAL DAY SERVICE.

**The American Legion Post 1084 will have a Memorial Day Service at Trinity Lutheran Cemetery on Irving Park Road one block west of Roselle Road on Monday May 27, 2013 at 11 AM. A reception will be held following the service at the American Legion Hall on east Maple Ave.**

### ROSELLE FIREWORKS FUND

Last year Roselle did not have fireworks on the 4<sup>th</sup> of July. The previous 2 years Roselle businesses



and the Taste of Roselle paid for it. We sell glow sticks at the event as a fund raiser which generally netted \$1,000 to our operating fund. Last year we missed this additional financial support.

The village has started a private donation plan this year asking residents and businesses to donate a total of \$25,000 for the display. Please give generously to this effort.

### *PASSPORT ADVENTURE PROGRAM*

Join the fun. The passport program is your ticket to many amazing and exciting programs at various museums. The program runs from Memorial Day to Labor Day. Get a Passport Book and visit museums listed in the book. The Passports are available at the museum, or the Roselle Public Library, after May 31st. Visit 5 museums and get a certificate or visit 7 museums and receive a prize. Turn your Passport in at the History Museum to get your prize. As you visit each Museum get that page of your book stamped. The program is designed for children between the ages of 4 and 12. It is sponsored by the Kane-DuPage Regional Museum Association.

## THE TURNER FARM

By Bob Beauprez

Winter in the 1960's reminds me of the pond, the cornfield and the creek teeming with wild game. Howard and Hazel Turner often allowed hunters to walk their farmland in pursuit of pheasants and rabbits. Being a colleague of Hazel at Lake Park High School she invited me to come early for coffee and conversation prior to sunrise.

My downstate background as a youngster gave me numerous opportunities to hunt and fish. So at the dawn's breaking I put on my hunting coat, bridged my 12 gauge shotgun across my arm and challenged my hunting skills.

The many acres of corn were too expansive for one person, so I limited my terrain to the creek bed. The brush and weeds on both sides of the water were thick allowing the pheasants ample protection. Occasionally a bird would fly too far away to shoot, and then a hen cackled her way to safety. Finally after a missed shot or two I succeeded in bagging one or two birds, a tasty repast for those who enjoy wild meat. One day a large snowy white owl flew gracefully in front of my view and then away.

Our environment changes along with our habits. Places like Town Acres, Ventura 21, and Buttonwood development were built on parts of the Turner farm, but they can't erase my memories of what was a part of Roselle's rural history.

## MEMBERSHIP RENEWAL

Well, January and February of 2013 have come and gone! It's hard to believe how fast time flies by. Many of our member supporters have already renewed their commitment for the 2013 membership year. If you have not yet done so, please take advantage of the form on the back of this newsletter to do so.

The Village of Roselle continues to do much for us. They provide our beautiful museum campus and buildings so that we can continue to collect, catalog and present the history of our village and the surrounding area. They also provide some funds toward our operations but the majority of our financial support comes from people like you.

You have heard the story before but your donations help us in many ways. Your financial support keeps the museum doors open and the exhibits maintained and updated. It helps us to purchase artifacts of interest and of course equipment needed to run our operations. Our small cadre of volunteers works tirelessly to make the museum interesting for visitors. Did you know that 80% of our visitors are school children, scout troops and parents who bring their children here to learn more about our history in Roselle?

If you haven't visited us in a while, please stop by and take a look. We are open every Sunday between 2 and 4 PM. We can also accommodate larger groups at almost anytime with some advance notice.

Please help us once again and remember, if you can renew in the amount of \$50 or more, mark the box and we will send you a complimentary copy of our Remembering Roselle pictorial history.

Thank you in advance for your generous support!.

*Yes, I'd like to help the Museum! Here's my membership contribution for 2013*

*Mail to: Roselle History Museum, 39 E. Elm St. Roselle, IL 60172*

*New*     *Renewal*    *Circle One:*    \$25    \$50    \$100    \$250

*My check is for at least \$50 . Please send my free copy of Remembering Roselle*

*Name* \_\_\_\_\_

*Address* \_\_\_\_\_

*City* \_\_\_\_\_ *State* \_\_\_\_\_ *Zip* \_\_\_\_\_

*Phone* \_\_\_\_\_,

If you read the article on page 2 of this issue, you now know a little about an old business in Roselle. If you like this kind of information, please let us know and we'll try to do others. If you really want to know more about these former businesses, consider purchasing a copy of our history book, *Remembering Roselle*. Cost is only \$20. Better yet, join the museum or, re-new your current membership for at least \$50, and get a complimentary copy of the 130 page book. It is filled with historical pictures and information about Roselle.

**ROSELLE HISTORY MUSEUM**

**39 E. ELM STREET**

**ROSELLE, IL 60172**

